



Order online: concord-surgical.com
 Phone orders 1-877-330-3335 (toll free)
 Fax orders 1-888-897-8081



10% OFF

Instrument wraps



Premium quality, re-usable, 2 ply

Size	Code	Reg price	Sale price
20" x 20"	IW2020	\$13.50	\$12.15
24" x 24"	IW2424	\$15.75	\$14.18
30" x 30"	IW3030	\$20.00	\$18.00
40" x 40"	IW4040	\$30.00	\$26.99
10" x 12"	GC102	\$7.00	\$6.30
Towel - green	ST1833	\$7.00	\$6.30
Towel - blue	BT1833	\$7.00	\$6.30



"Making solo spays easy and safer"

The **Dowling Spay Retractor** is placed to maintain exposure "hands-free", without rupturing the ovarian ligament.

Features:

Better Ligature security

Less post-op pain , faster surgery

No tissue damage, therefore no leakage from proximal to the ligatures



Code OEL-21-005

SALE \$134

REG \$145

Stainless steel mouth gags

20% OFF

size	code	reg price	sale price
X small - 5cm	OSU-0046-05	\$40	\$32
Feline - 9cm	OSU-0046-09	\$39	\$31
Canine - 11cm	OSU-0046-11	\$40	\$32
Canine - 14cm	OSU-0047-14	\$46	\$37

Concord



To be removed from email or fax list, please email concordvetsupply@telus.net or call toll free 1-877-330-3335



OCT FLYER

SALE

Savings on instrument wraps, instrument marking tape, Dowling Spay Retractor,, dental hand instruments and much more!

WAHL



INTEGRA



EZ ID™ Tape System Neon



6 colors - 3 foot rolls
 storage rack
 autoclavable to 136 deg. C
 8 rolls of tape in total

10% OFF

REG \$66

Code EZ-70Z310SET

ONLY \$59.99

10 foot Individual colour rolls available below

Product Code	Size	Colour	Reg. price	Sale price
EZ-70Z300/U	10 Ft	Copper	\$16	\$14.40
EZ-70Z300/BL	10 Ft	Blue	\$16	\$14.40
EZ-70Z300/Y	10 Ft	Yellow	\$16	\$14.40
EZ-70Z300/G	10 Ft	Green	\$16	\$14.40
EZ-70Z300/O	10 Ft	Orange	\$16	\$14.40
EZ-70Z300/T	10 Ft	Teal	\$16	\$14.40
EZ-70Z300/P	10 Ft	Purple	\$16	\$14.40
Z-70Z300/NP	10 Ft	Pink	\$16	\$14.40
EZ-70Z300/R	10 Ft	Red	\$16	\$14.40
EZ-70Z300/I	10 Ft	Grey	\$16	\$14.40
EZ-707300/A	10 ft	White	\$16	\$14.40

Miltex Instrument Stain Remover



Code: CLN-3-740

Removes stains & tarnish
 Restores lustre
 For stainless steel chrome, nickel, brass

REG \$16

10% OFF

SALE \$14.40

High Speed Carbide Dental Burs



Premium quality

INTEGRA
LITHIUM AND POLYMER

Miltek

SALE

Description	Code	Reg price	Sale price
Crosscut Taper fissure FG 700	DFG700	\$18.50	\$16.65
Crosscut Taper fissure FG 701	DFG701	\$18.50	\$16.65
Crosscut Taper fissure FG 702	DFG702	\$18.50	\$16.65
Round Friction Grip FG 1/2	DFG1/2	\$18.50	\$16.65
Round Friction Grip FG 2	DFG2	\$18.50	\$16.65
Round Friction Grip FG 4	DFG4	\$18.50	\$16.65
Round Friction Grip FG 5	DFG5	\$18.50	\$16.65
Pear friction Grip FG 330	DFG330	\$18.50	\$16.65
Pear friction Grip FG 331	DFG331	\$18.50	\$16.65

15% OFF

Premium Veterinary Dental Instruments

Concord

French/Japanese Stainless steel



Description	Code	Reg price	Sale Price
Gracey Curette 11/12 - mini	MED-669-11/12	\$30	\$25.50
Probe/explorer double ended	MED-570/2	\$33	\$28.00
Small Animal dental extractor	MED-EX26	\$69	\$58.00
Periosteal elevator- molt	MED-871/1-2	\$40	\$34.00
Heidbrink Root tip pick -straight	MED-700/8	\$47	\$40.00
Bein Root elevators *	MED-680_	\$42	\$35.50
Jaquette Scaler - Towner	MED-651/10	\$30	\$25.50
Periosteal elevator, x-small EX9	MED-EX9	\$45	\$38.25
Extracting forceps #300	MED-300	\$144	\$122.0
Luxators - standard handles *	MED-LUX_	\$46	\$39.00
Sharpening oil	MED-S10	\$13	\$11.00

* Please call or goto website, or call for sizes

Concord

Veterinary Anatomical Models



Canine Jaw Model

depicts healthy & damaged teeth incl. key card

SALE

Reg \$165

Code: 9195

\$145



Canine Jaw Model - Clear

Healthy hinged jaw showing the roots of all teeth

SALE

Reg \$179

Code: 9196

\$159



Feline Jaw Model

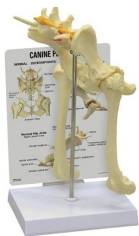
depicts healthy & damaged teeth incl. key card

SALE

Reg \$155

Code: 9190

\$139



Canine Hip & Pelvis Model

Comes complete with stand and key card

SALE

Reg \$219

Code: 9060

\$185



Canine Skin Parasites Model

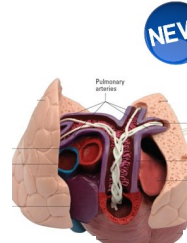
Flea, tick & mite on stand with key card

SALE

Reg \$229

Code: 9095

\$195



Canine Heart & Lung Model

Shows infestation of heart worm, + key card

SALE

Reg \$145

Code: 9151

\$133

WAHL



Bravura Professional Lithium Clipper

Reg \$185

SALE \$168

Code: WAH-59177

Professional quality, *ultra quiet*

5 in 1 adjustable blade, cuts to surgical #40

90 minute use on 60 minute charge

Advanced lithium, no memory battery

Cordless and corded operation

Full 1 year manufacturer's warranty



OCT FLYER

SALE

concord-surgical.com

Call toll free 1-877-330-3335

To be removed from email or fax list, please email concordvetsupply@telus.net, or call toll free 1-877-330-3335